

# Caller Display Information

## Set-up of Caller ID Feature on TD Modems



## Introduction

The TD & TDW series modems have the ability to indicate the phone number of the incoming call. This can be used purely for information, or can determine if the modem will answer the call, based on a comparison list stored in the modem.

Since caller display/caller ID is implemented differently around the world, the modem has different settings available to suit the country in which it is installed. This application note will only deal with the settings required when connected to the PSTN network in the U.K. B.T's method of implementing this feature uses the line reversal method. Detailed technical information on this method can be found in SIN 242 available from the following website:

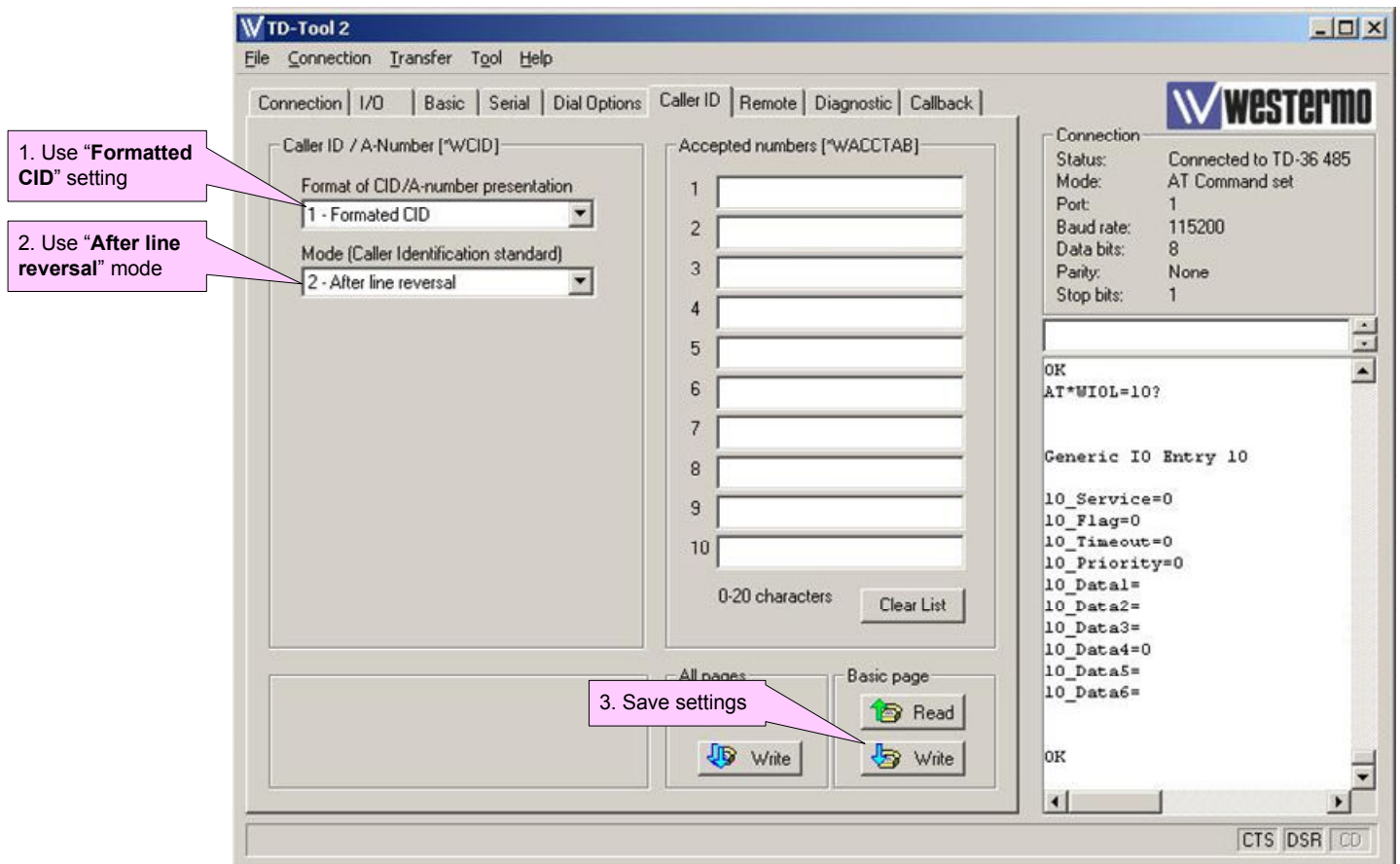
<http://www.sinet.bt.com/index.htm>

Caller display is normally a subscription feature that has to be requested on a standard analogue PSTN line. In addition to this, any device calling the modem must also have caller ID enabled on its line, in order for the information to be displayed. Therefore, the above conditions must be met for the modem's caller display function to work.

## 2. Modem Set-up

Power up the modem and connect to it using TD-Tool 2. Once the connection has read all the settings, click on the “Caller ID” tab.

Set the caller ID settings as shown below:



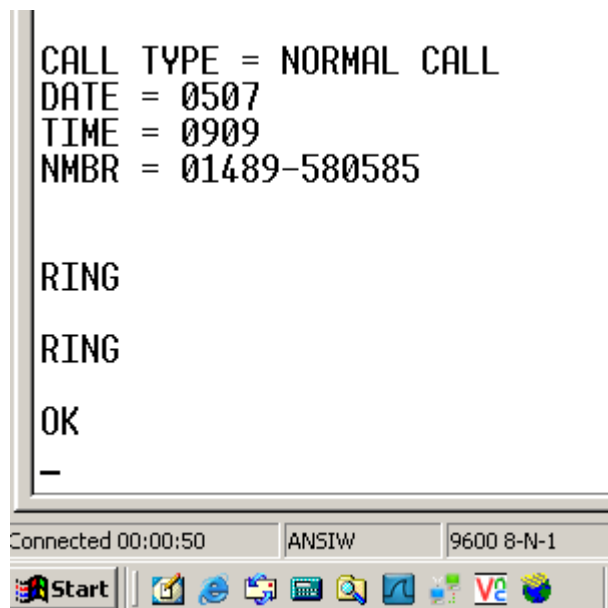
Alternatively, you can use a discrete AT command to set-up this mode using a terminal program. You will need to enter the following two commands:

- AT\*WCID=1,2 <CR> (Set Caller ID mode)
- AT&W <CR> (Stores setting to memory)

### 3. Caller ID Output

Once the modem has been setup it is now possible to monitor the information of the incoming call from the serial port of the modem.

Set up a terminal program with the same serial parameters as the modem. Now make a call to the modem using a CLI enabled line. You will see the following information appear on the terminal screen:



The caller ID information will appear before the modem starts to indicate the incoming call and subsequent pickup.

The date format is in MMDD

The time format is HHMM using 24hr clock



Westermo Teleindustri AB SE-640 40 Stora Sundby, Sweden  
**Westermo Web site: [www.westermo.com](http://www.westermo.com)**

## **Sweden**

[www.westermo.se](http://www.westermo.se)  
[support.sverige@westermo.se](mailto:support.sverige@westermo.se)  
Phone: +46 (0)21 548 08 00  
Fax: +46 (0)21 351850

## **France**

[www.westermo.fr](http://www.westermo.fr)  
[support@westermo.fr](mailto:support@westermo.fr)  
Tél : +33 1 69 10 21 00  
Fax : +33 1 69 10 21 01

## **United Kingdom**

Web: [www.westermo.co.uk](http://www.westermo.co.uk)  
[technical@westermo.co.uk](mailto:technical@westermo.co.uk)  
Telephone: +44 (0)1489 580585  
Fax: +44 (0)1489 580586

## **Singapore**

[www.westermo.com](http://www.westermo.com)  
[sales@westermo.com.sg](mailto:sales@westermo.com.sg)  
Phone: +65 6743 9801  
Fax: +65 6745 0670

## **Germany**

[www.westermo.de](http://www.westermo.de)  
[support@westermo.de](mailto:support@westermo.de)  
Tel: +49(0)7254 95400-0  
Fax: +49(0)7254-95400-9

## **International**

[www.westermo.com](http://www.westermo.com)  
[support@westermo.se](mailto:support@westermo.se)  
Phone: +46 (0)16 42 80 00  
Fax: +46 (0)16 42 80 01