



FIRMWARE UPGRADE VIA TD-Tool 2

IMPORTANT NOTICE;

Once a modem is upgraded from version 4101-0XXX to 4101-4XXX the unit cannot be downgraded back to 4101-0XXX, that would DAMAGE and BREAK the unit. Such failures are not covered by Warranty.

Example;

The customer is currently running a TD-36 with firmware version 4101-**0714** and has decided to test the newest firmware, 4101-4402. Once upgraded, the TD-36 is now running 4101-**4402**. From this point on the unit cannot be downgraded to 4101-**0714** again, or any other firmware in the older 4101-**07XX** series. That would render the unit unusable and void the Warranty. However, the customer can change between versions in the newer firmware series (4101-**4XXX**) without any problems. Going from **4101-4402** to **4101-4401** will work but Westermo does not recommended running older firmware since there are fixes made to the newer version that will guarantee that the modem works as it should.

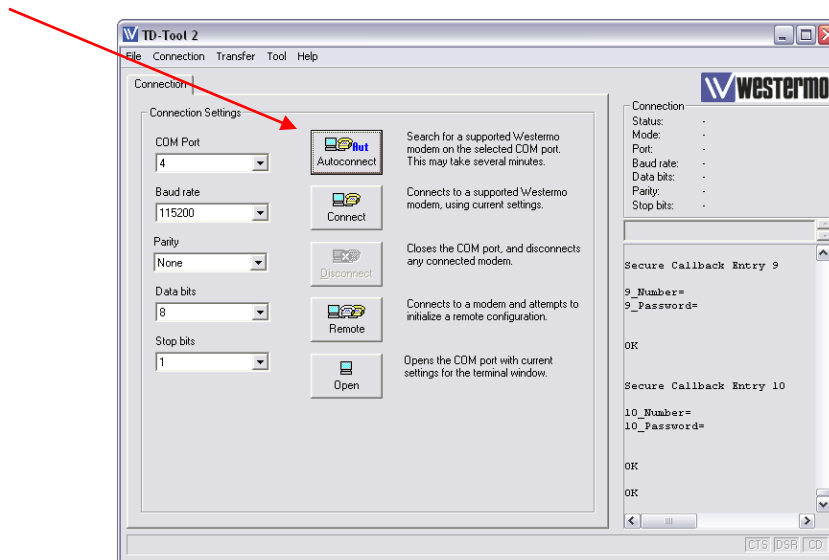
Below is a small table to further clarify the different scenarios.

Current Firmware	New firmware	Outcome	Comment
4101-0614	4101-4302	OK	No problems.
4101-4501	4101-4502	OK	No problems.
4101-4502	4101-4501	OK	Not recommended.
4101-4502	4101-0714	DAMAGE	Unit unusable and warranty void
4101-0714	4101-0713	OK	Not recommended.
4101-0713	4101-0714	OK	No problems
4101-4602	4101-1414	DAMAGE	Unit unusable and warranty void

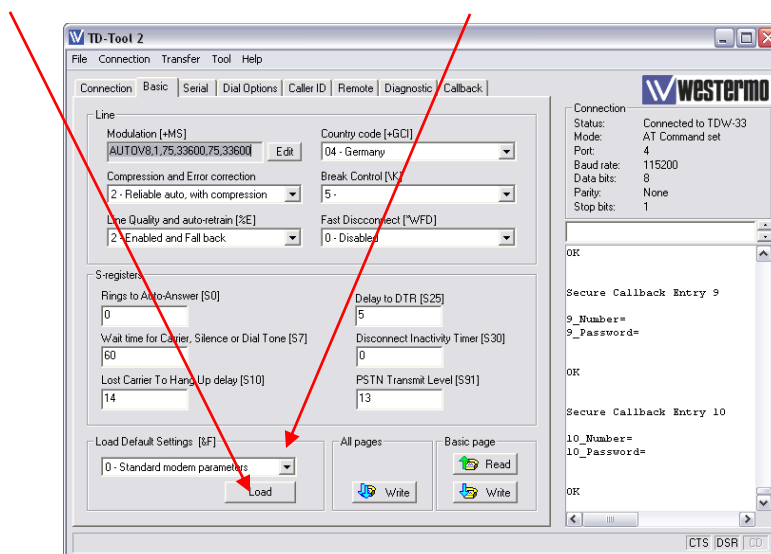
Westermo recommend customers to always upgrade to the latest firmware version, if possible.

Firmware Upgrade via TD-Tool 2

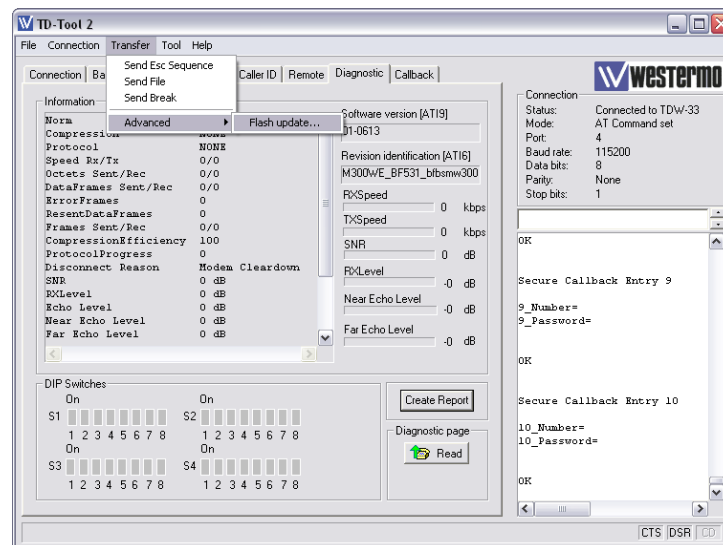
1. Start TD-Tool2 on your computer, if you haven't installed it; install it first from the CD that is delivered with the modem. Check if the TD-Tool Version is 4200.1508 2.08, or later, in the *About* menu.
2. Choose the right COM-Port and connect the modem via a straight RS-232 cable to your computer
3. Click on the Autoconnect button, after a short time, the modem shall be found and read out.



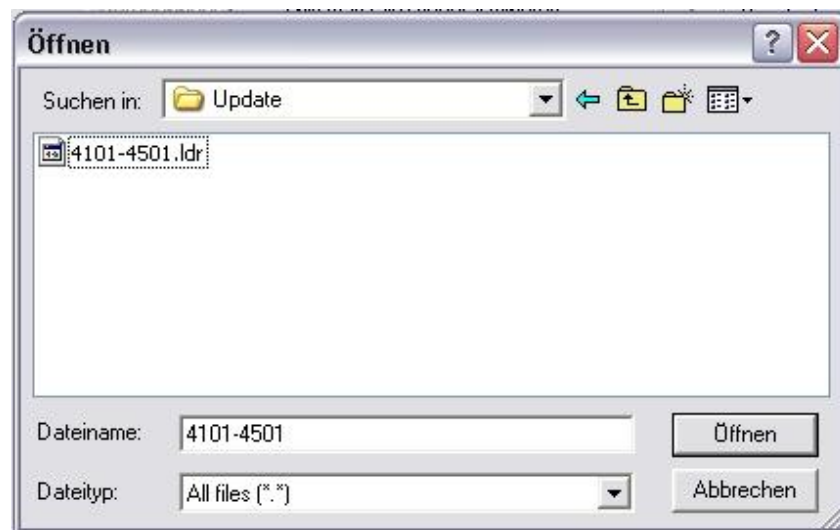
4. Change to the Basic registercard
5. Click on the *Load button* for factory defaults, choose in the drop field 2- *Westermo specific parameters* and click again on Load



6. Select in the *Transfer menu Advanced/Flash update*



7. In the following window, choose the .ldr firmware file and click Open.

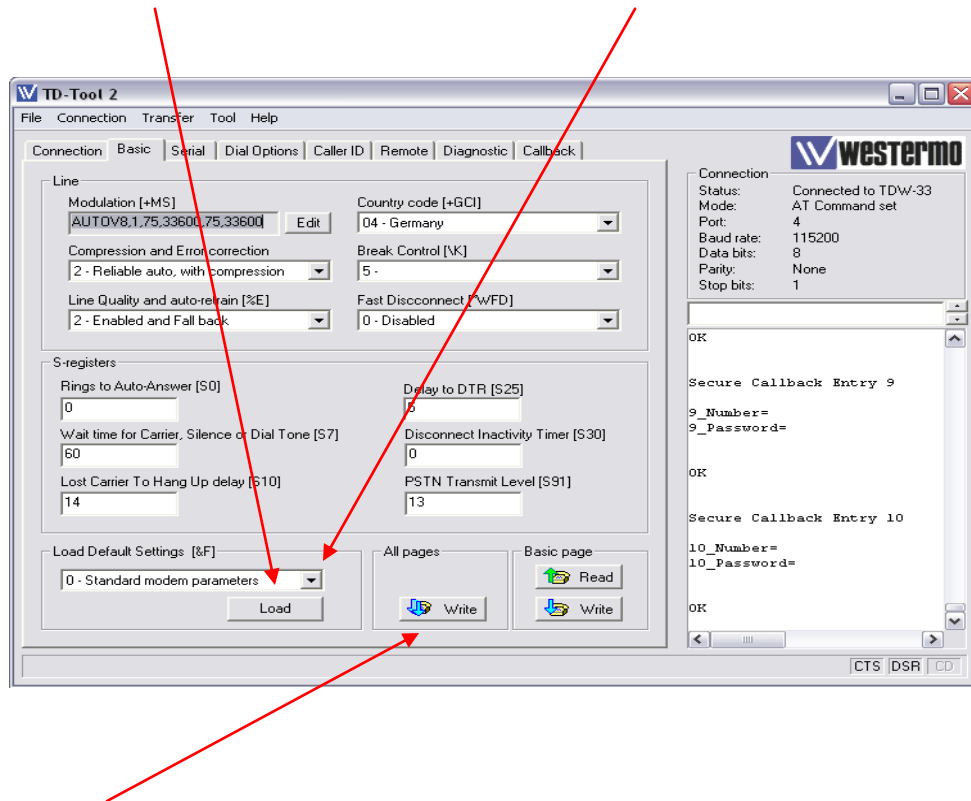


8. A Warning message appears, click OK.

9. The upgrade will start and after the update process, the message "*Download successful*" will appear.

10. Click on the *Load button* for factory defaults, choose in the drop field 2- *Westermo specific parameters* and click again on Load.

11. Click on *write all pages*.
12. Reset the unit via powersupply afterwards, and reconnect via TD-Tool 2



If the Upgrade does not succeed, set the modem manually either via DIP-switches or AT+IPR=115200 to 115.2Kbit/s and retry.

If the Flashing routine gets stuck, and the modem shows only DTR / RTS / PWR Led's, reset the unit manually via supply and close TD-Tool 2

If TD-Tool 2 doesn't work on your computer, than try to perform the update with a terminal software, like shown in the upgrade example UpdateTelemodemTerminal.pdf

Contact Westermo technical support

If you have technical questions about this product that are not answered in this document, you can contact Westermo as follows:

Sweden

www.westermo.se
support.sverige@westermo.se
Phone: +46 (0)21 548 08 00
Fax: +46 (0)21 351850

United Kingdom

Web: www.westermo.co.uk
Technical e-mail:
technical@westermo.co.uk
Telephone: +44 (0)1489
580585
Fax: +44 (0)1489 580586

Germany

www.westermo.de
support@westermo.de
Tel: +49(0)7254 95400-0
Fax: +49(0)7254-95400-9

France

www.westermo.fr
support@westermo.fr
Tél : +33 1 69 10 21 00
Fax : +33 1 69 10 21 01

Singapore

www.westermo.com
E-mail: sales@westermo.com.sg
Phone +65 6743 9801
Fax +65 6745 0670

International

www.westermo.com
support@westermo.se
Phone: +46 (0)16 42 80 00
Fax: +46 (0)16 42 80 01